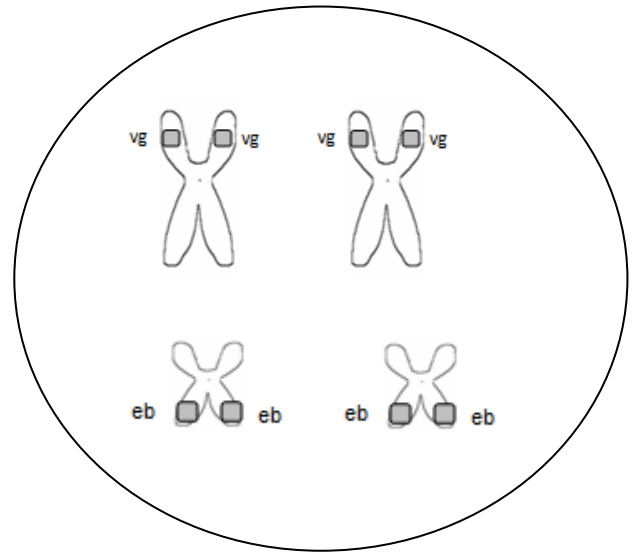
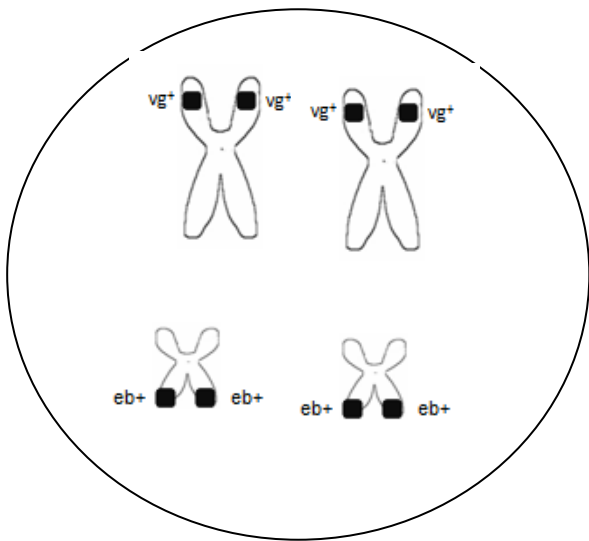
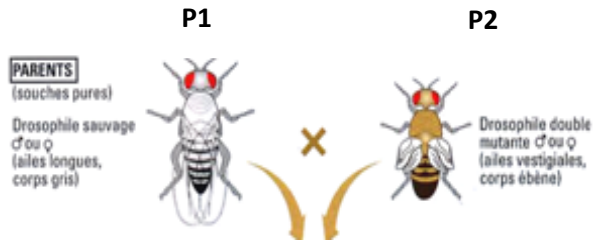


# 1. PREMIER CROISEMENT

## Génération parentale



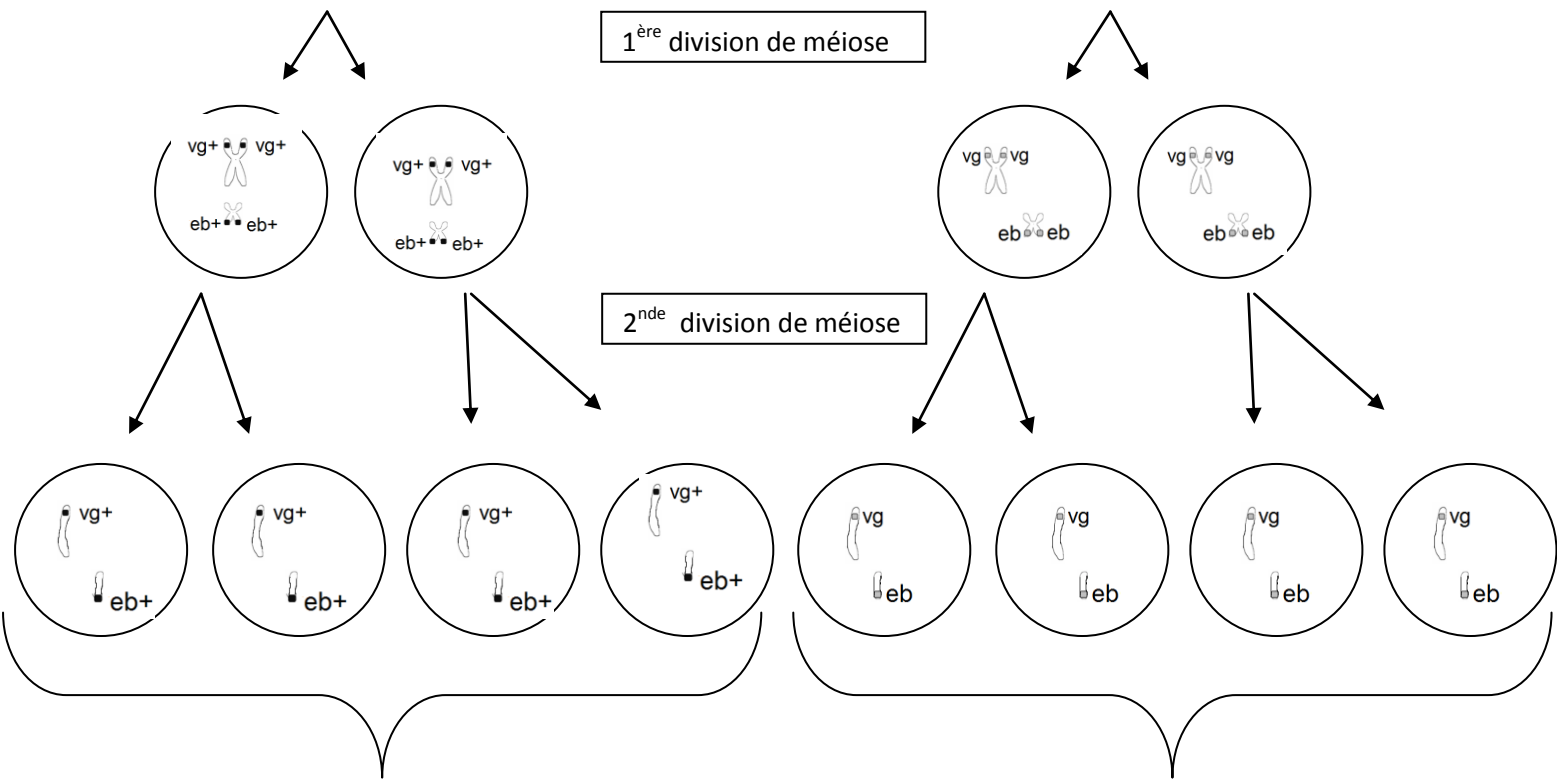
Génotype P1 ( $vg^+//vg^+$ ) et ( $eb^+//eb^+$ )  
Phénotype [ $vg^+ ; eb^+$ ]

Génotype P2 ( $vg//vg$ ) et ( $eb//eb$ )  
Phénotype [ $vg ; eb$ ]

## La méiose à l'origine des gamètes des parents

1<sup>ère</sup> division de méiose

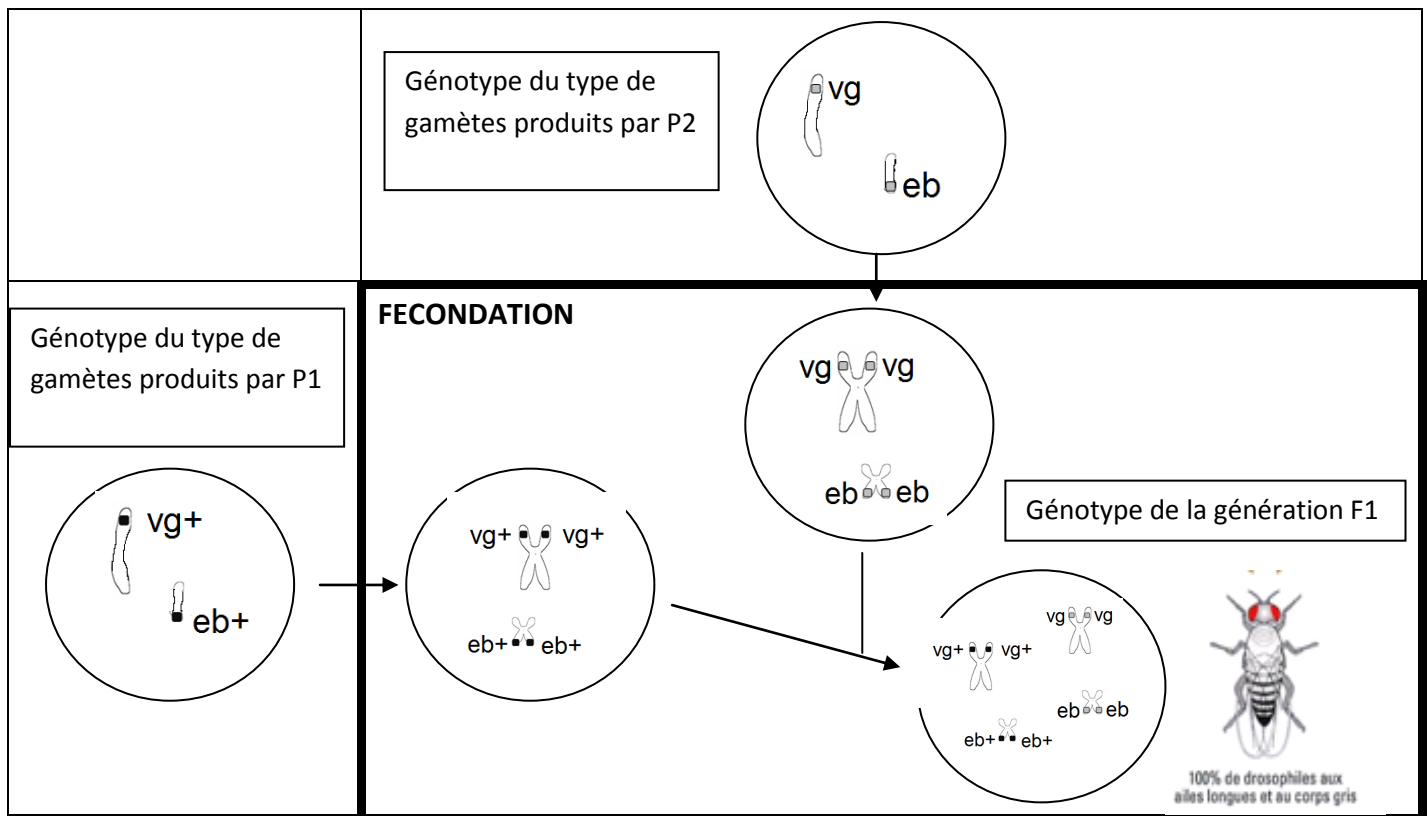
2<sup>nde</sup> division de méiose



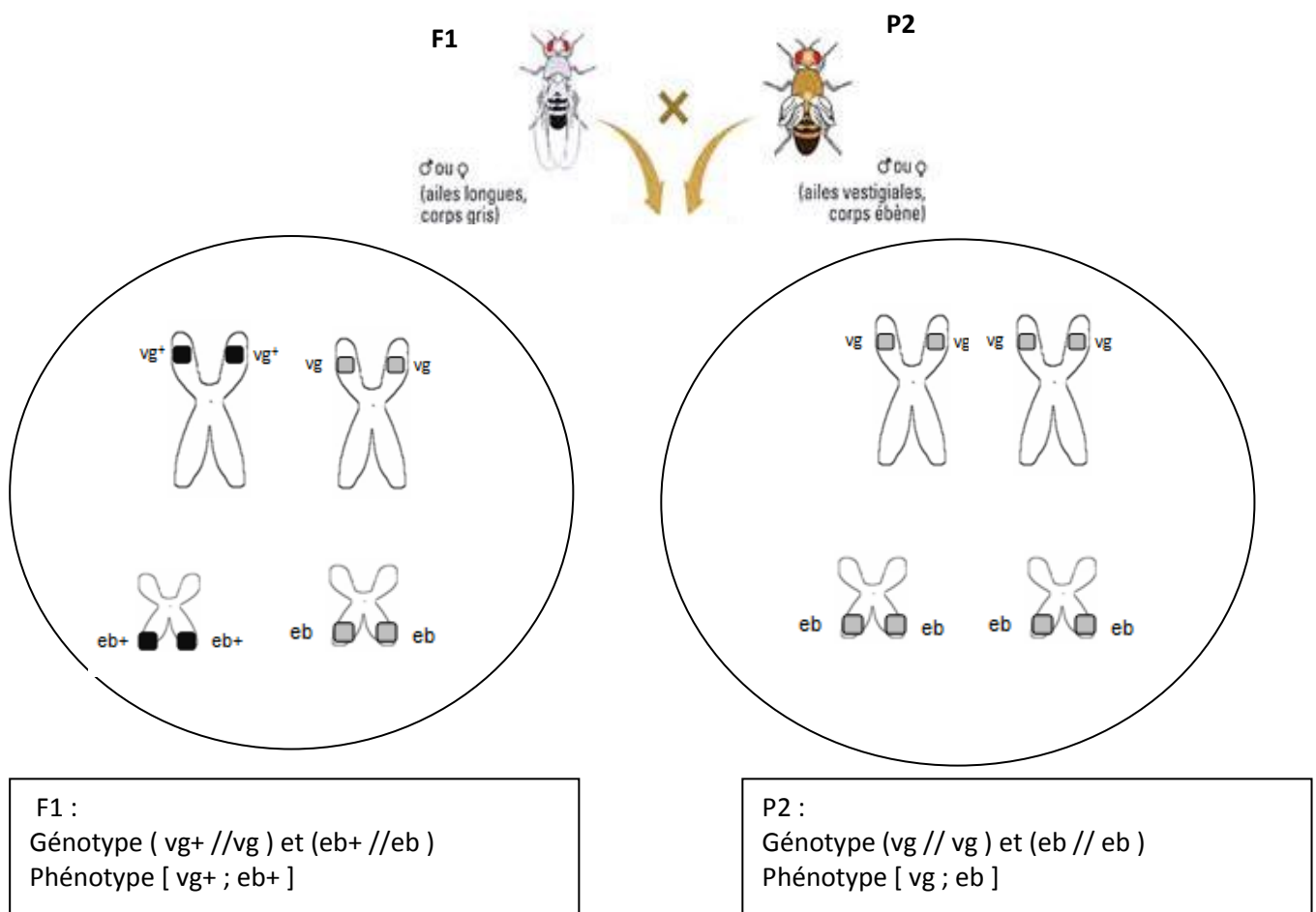
Les gamètes de P1

Les gamètes de P2

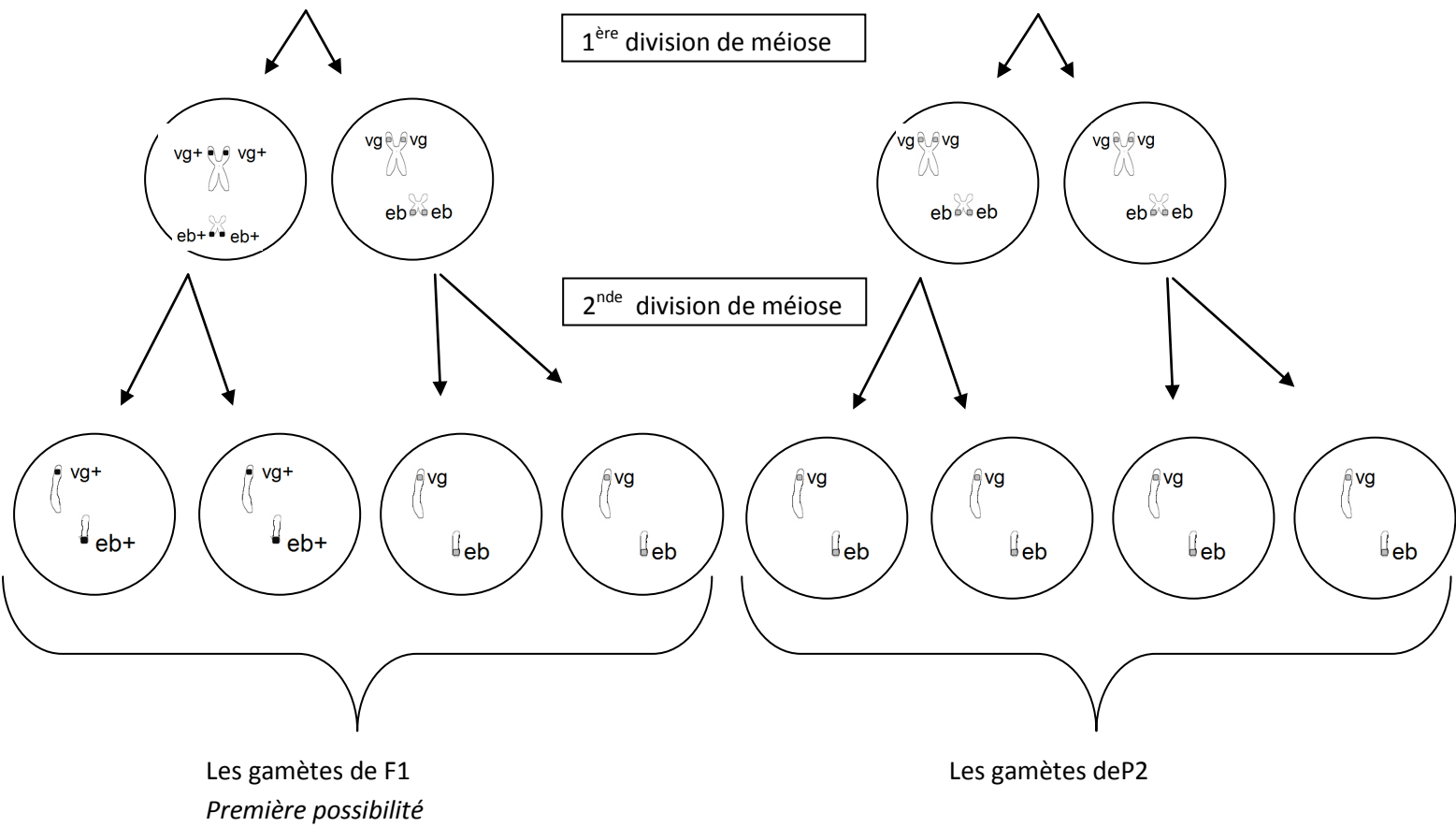
## La fécondation qui donne naissance à la génération F1



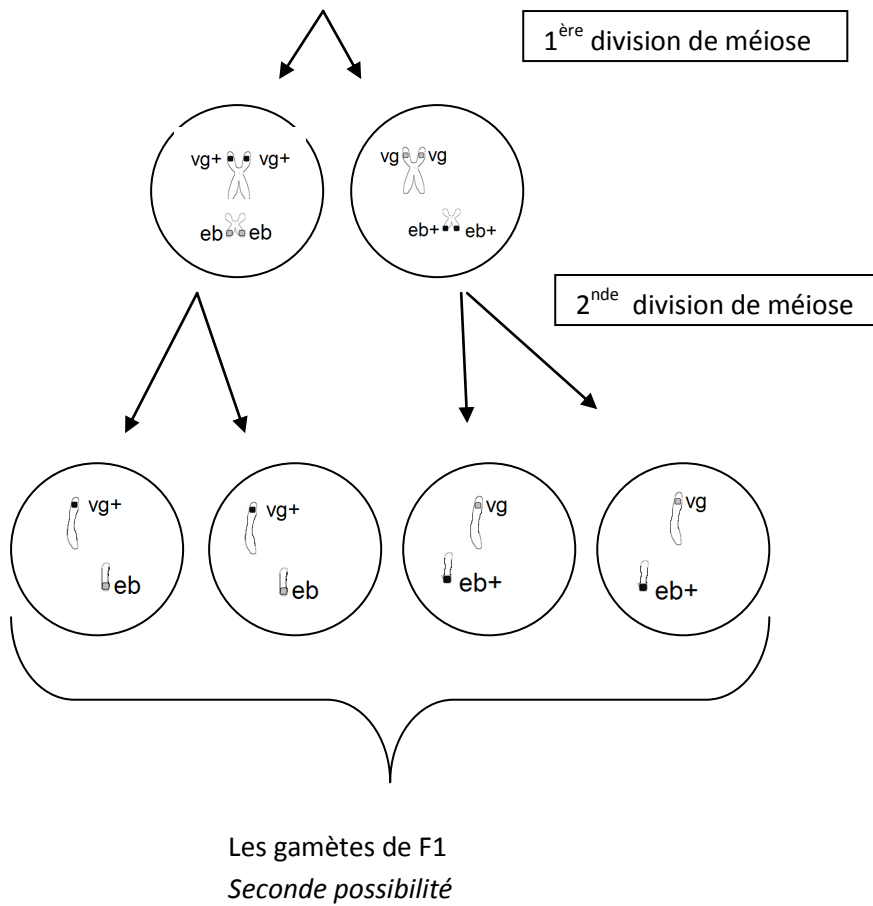
## 2. SECOND CROISEMENT = TEST CROSS



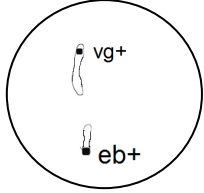
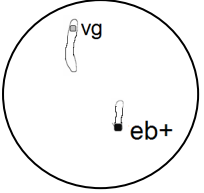
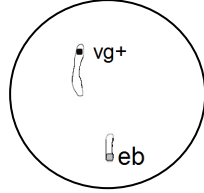
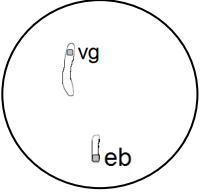
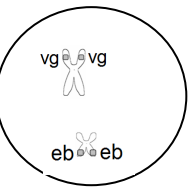
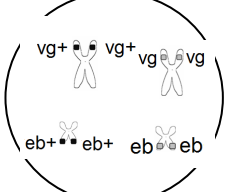
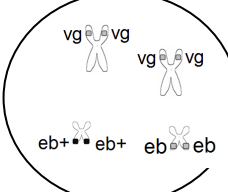
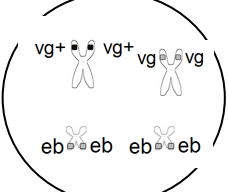
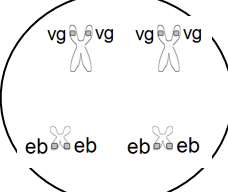
**La méiose à l'origine des gamètes de F1 et P2**



**OU**



## La fécondation qui donne naissance à la génération F2

|  |  |  |   |  |  |
|--|--|--|---|--|--|
| Génotype des types de gamètes produits par F1                  |   |   |  |   |  |
|  | <b>FECONDATION</b>   |  |   |  |  |
| Génotype du type de gamètes produits par P2                    |  |  |   |  |  |
| Phénotype<br>[ ; ]   | [vg+ ; eb+]  | [vg ; eb+]   | [vg+ ; eb]  | [vg ; eb]  |  |
| Génotype<br>( // ) et ( // )                                   | (vg+ //vg)<br>et (eb+ //eb)  | (vg //vg)<br>et (eb+ //eb)   | (vg+ //vg)<br>et (eb //eb)  | (vg //vg)<br>et (eb //eb)  |  |
| Comptage sur les plaquettes fournies<br>(moyenne de la classe) |  |  |   |  |  |
| Pourcentage de chaque phénotype                                | 25%  | 25%  | 25%   | 25%  |  |

Drosophiles à ailes longues, corps gris



Drosophiles à ailes vestigiales, corps gris



Drosophiles à ailes longues, corps ébène



Drosophiles à ailes vestigiales, corps ébène

