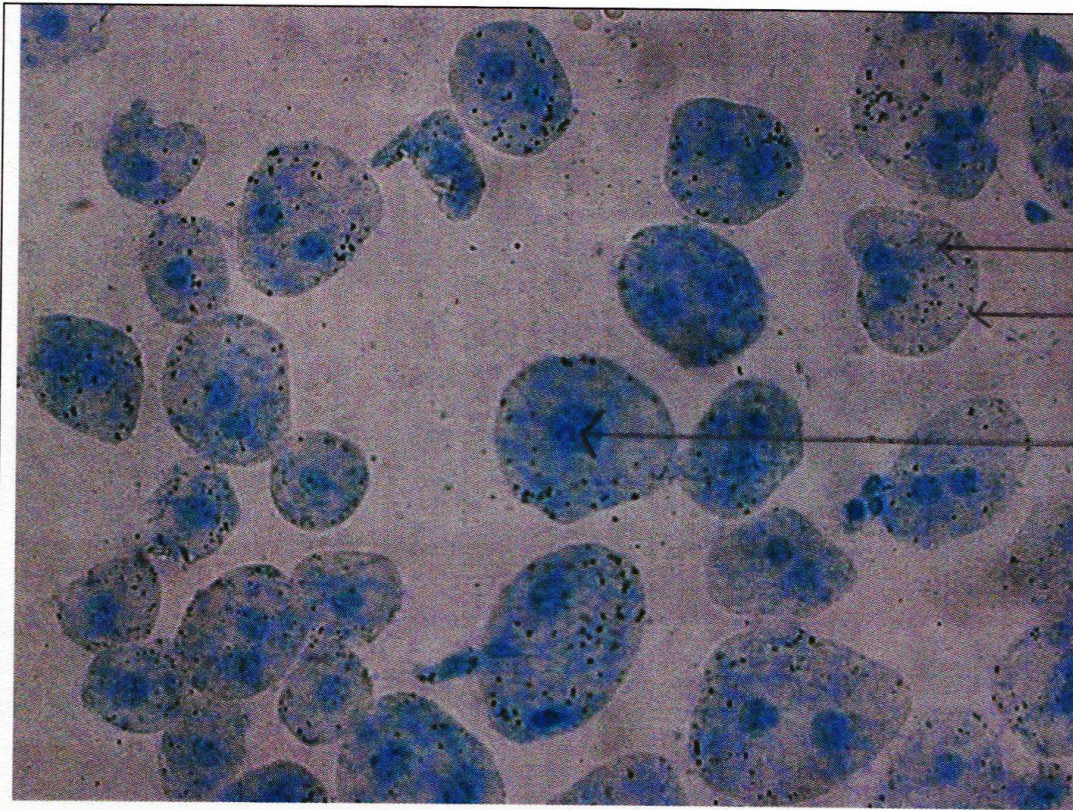


HOMME



cytoplasme

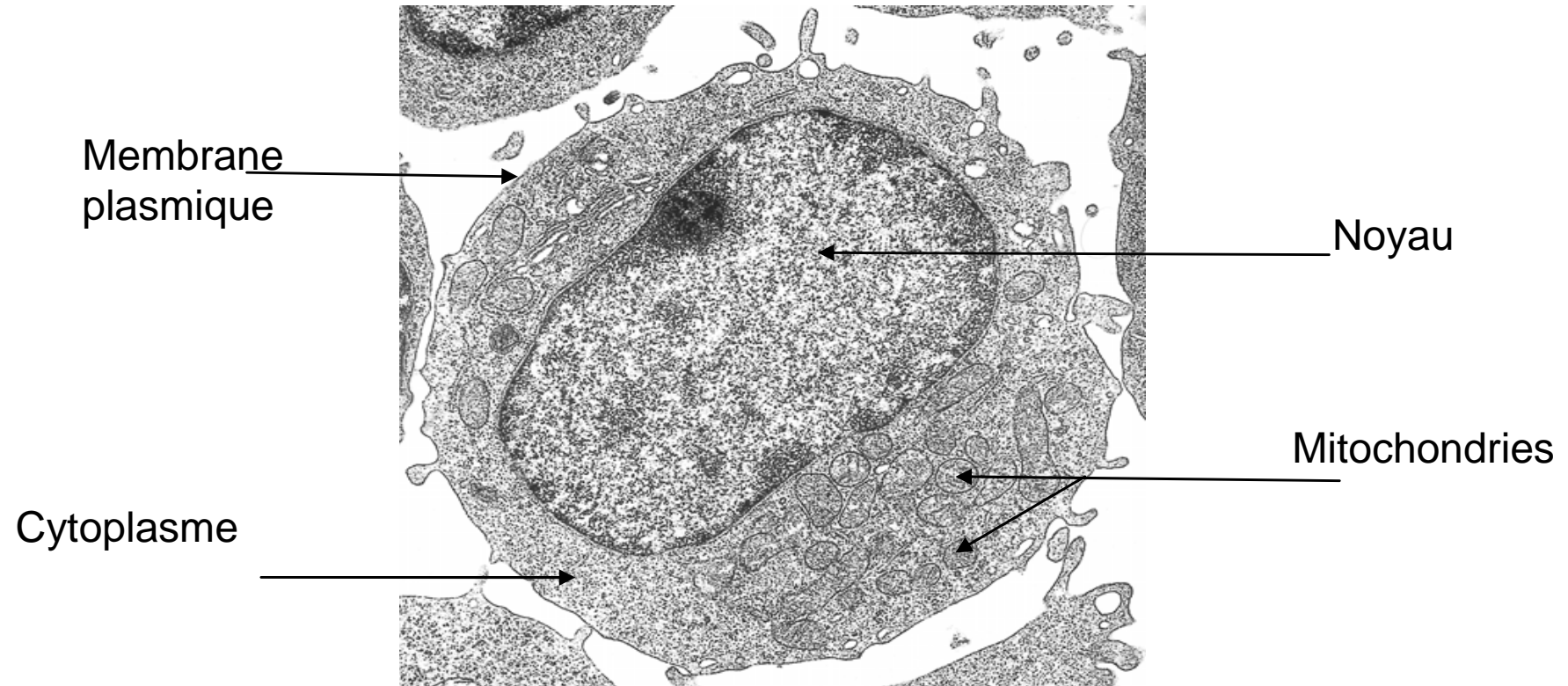
membrane

noyau

Observation de cellules buccales au microscope optique

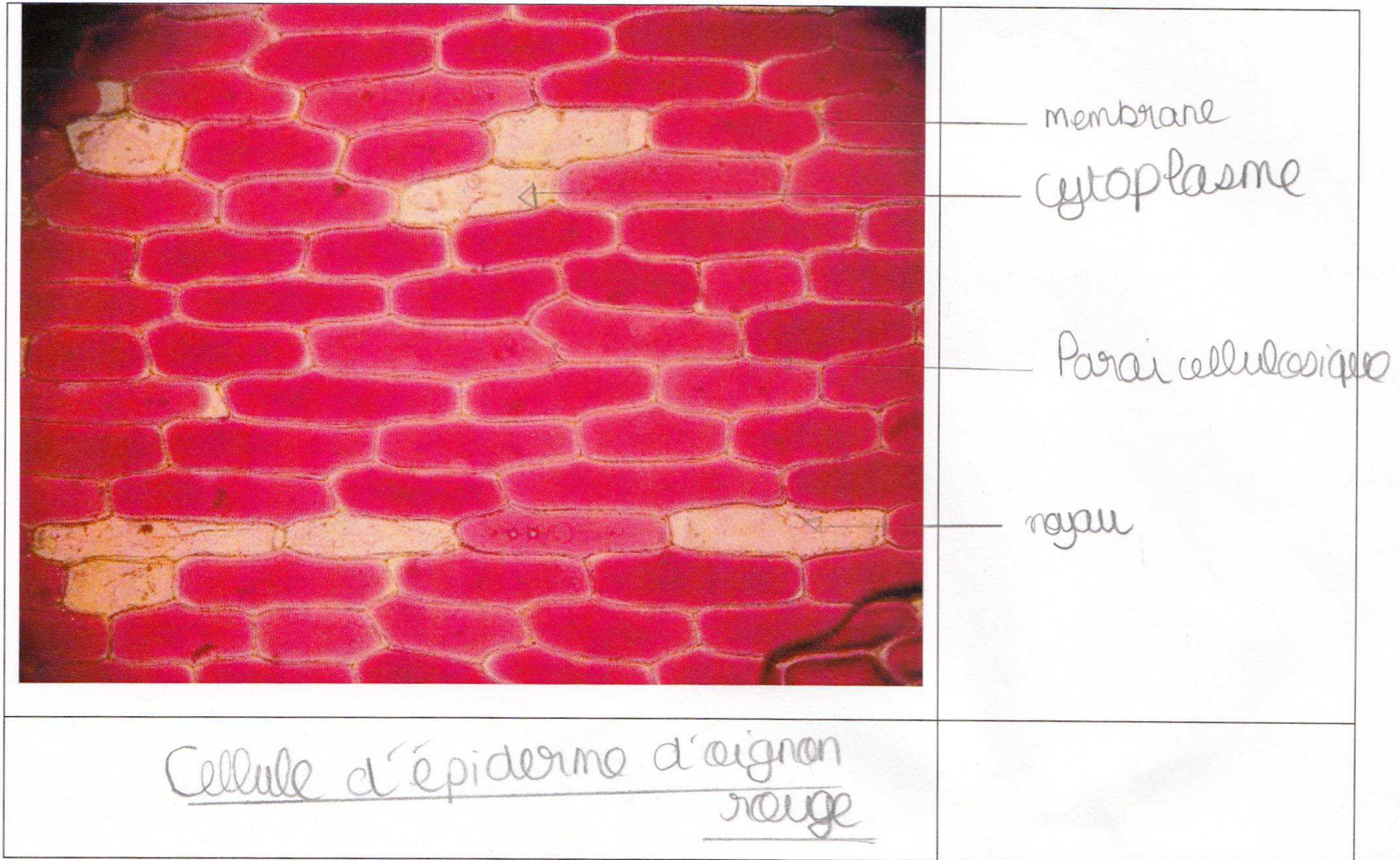
grossissement
x400

HOMME



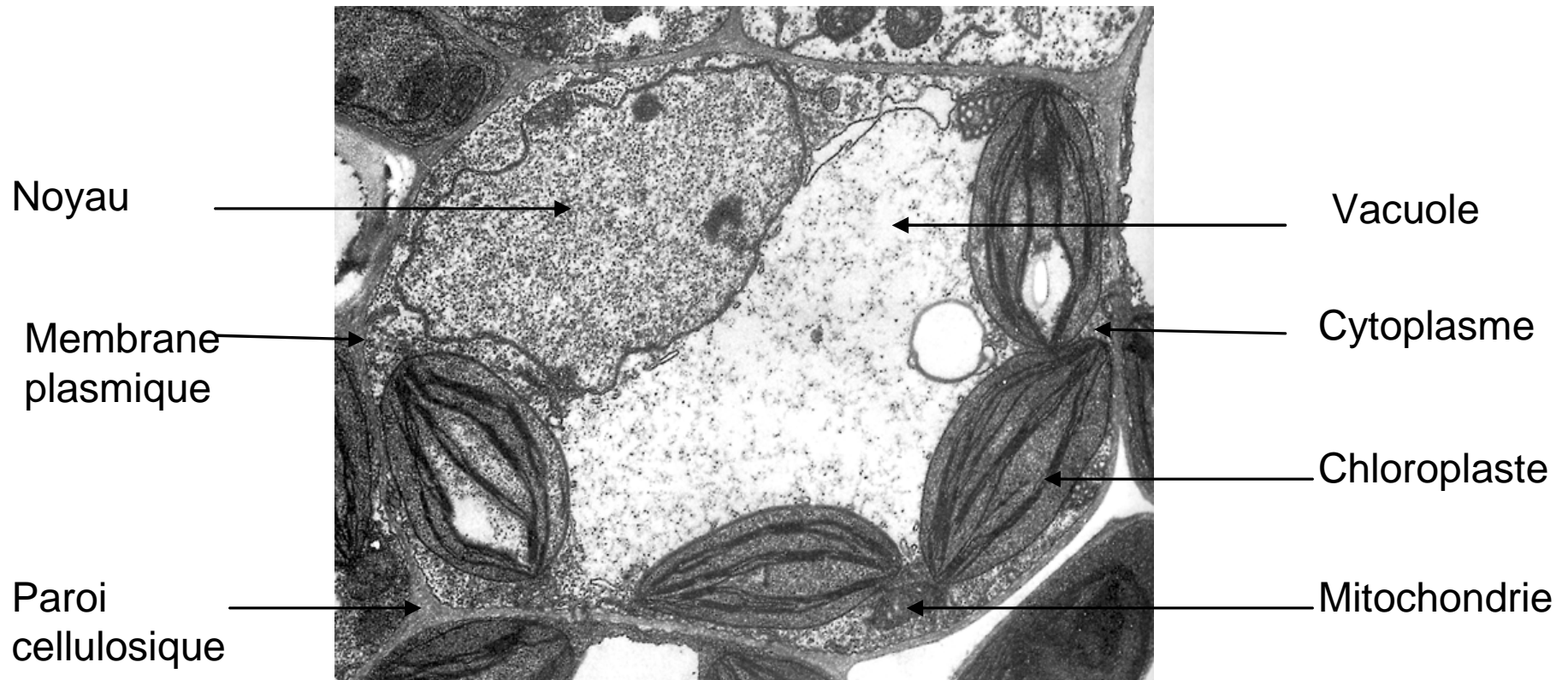
Cellule buccale humaine en microscopie électronique

OIGNON



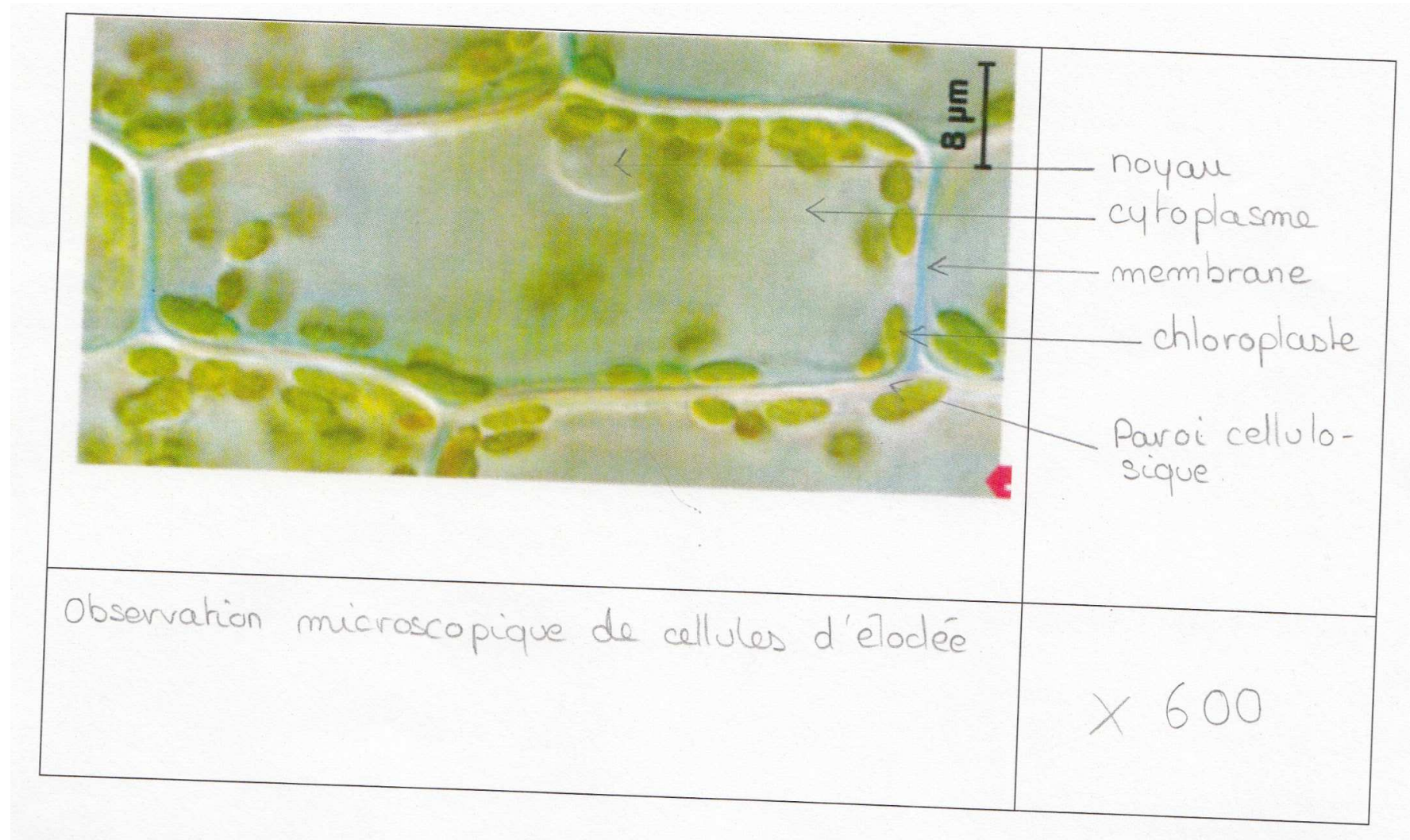
Observation au microscope optique

OIGNON



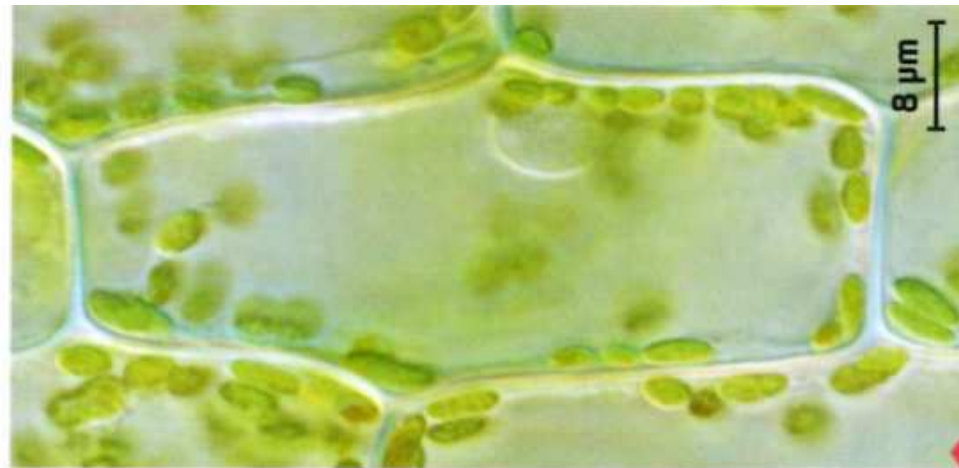
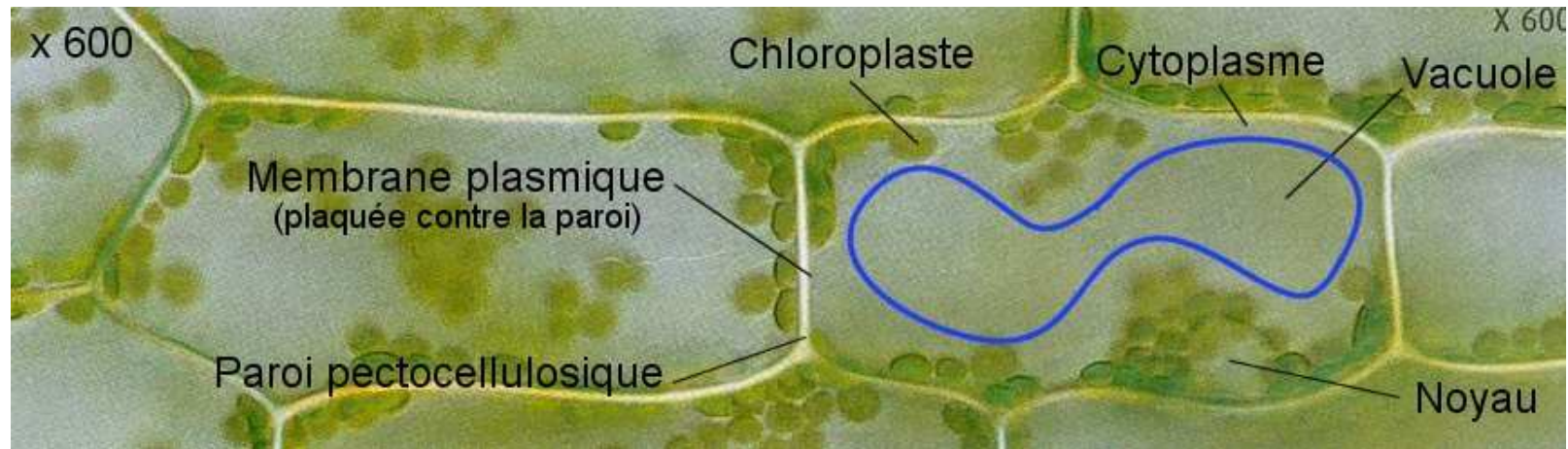
Cellule de feuille d'oignon en microscopie électronique

Elodée



Observation au microscope optique

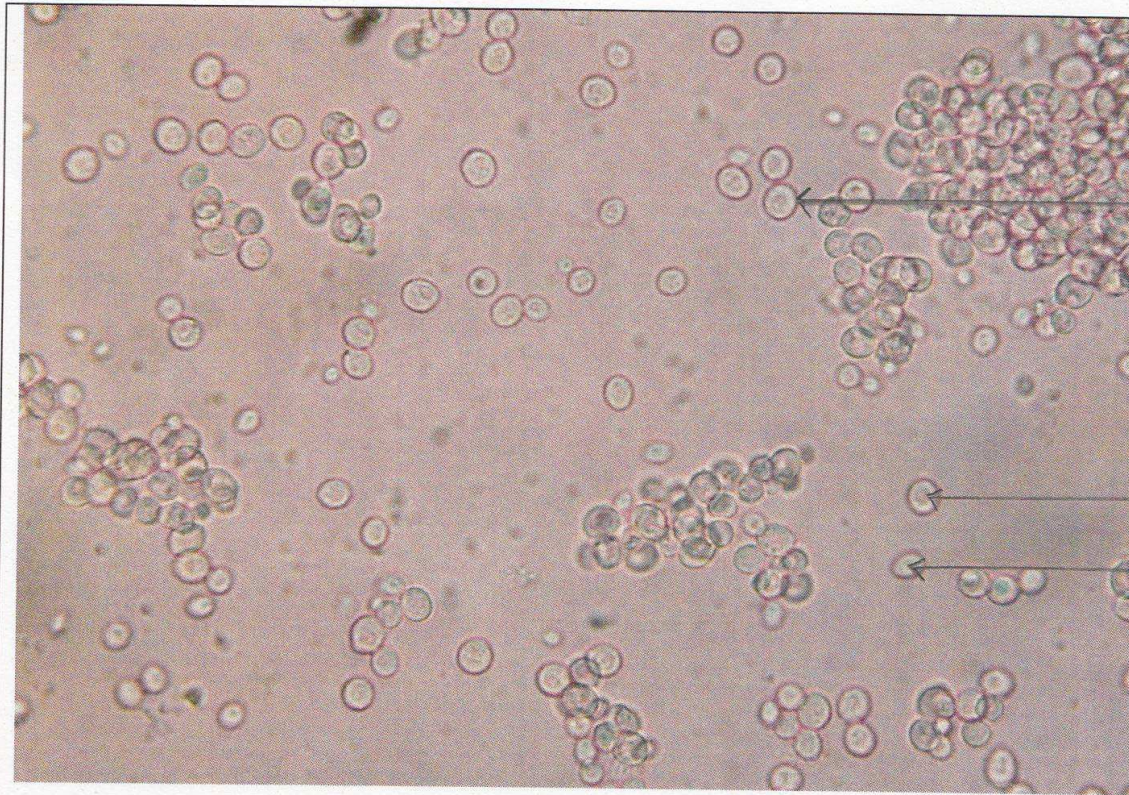
Elodée



NB: La cellule d'élodée comporte des mitochondries, bien qu'elles ne soient pas observables au microscope optique.

Cellule d'élodée en microscopie optique

Levure



membrane.

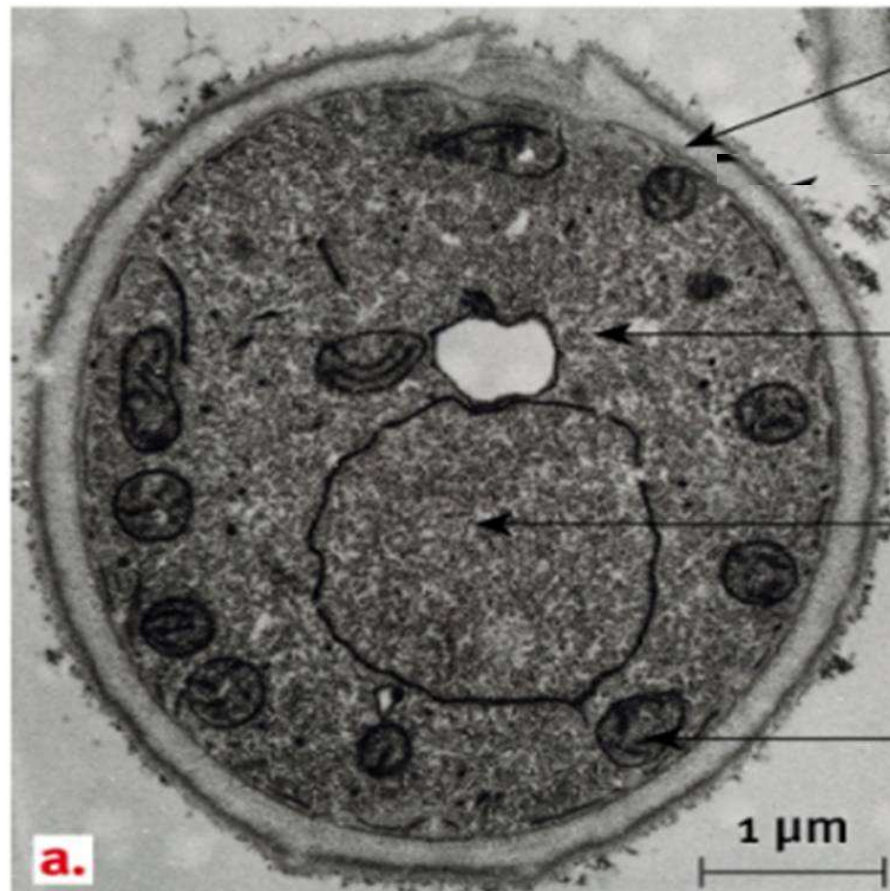
noyau.

cytoplasme.

Observation des levures au microscope x 600.

Observation au microscope optique

Levure



membrane

cytoplasme

noyau

mitochondrie

Levure en microscopie électronique

Nostoc



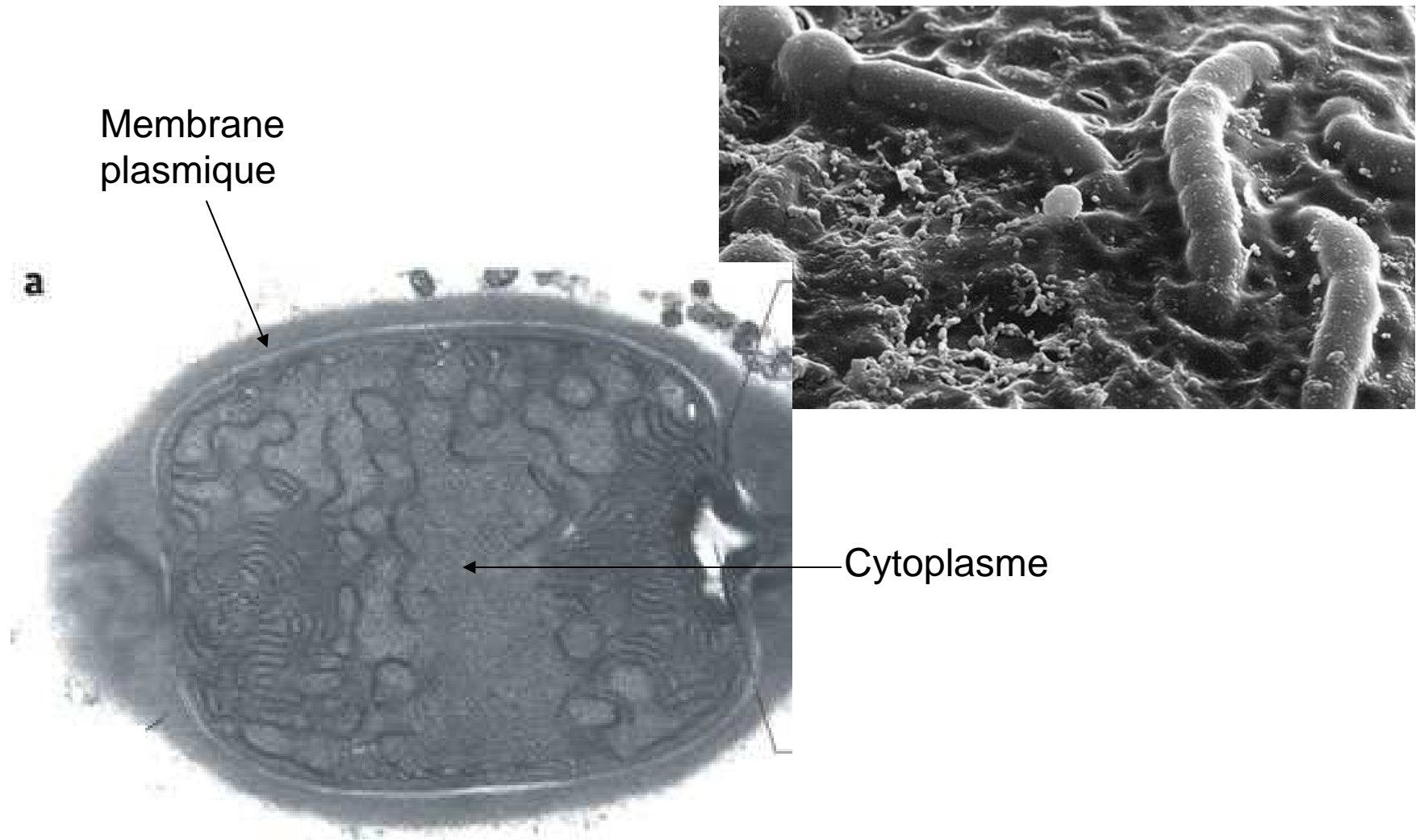
membrane

cytoplasme

Observation d'une cellule de nostoc x400

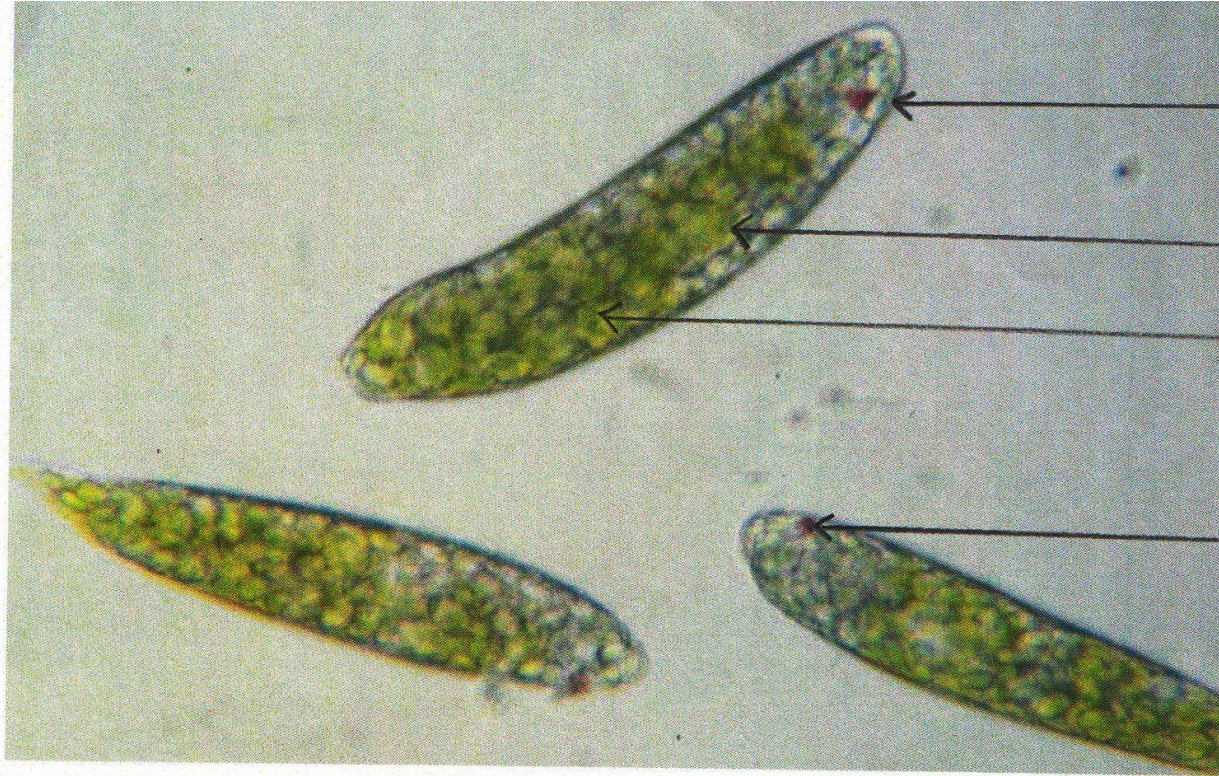
Observation au microscope optique

Nostoc



Nostoc en microscopie électronique

CHLORELLE



membrane.

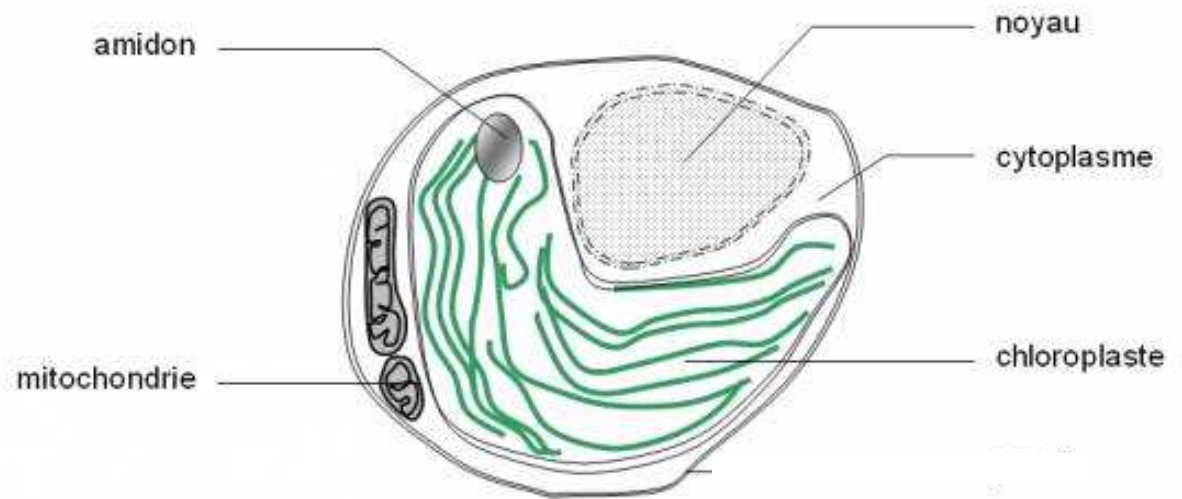
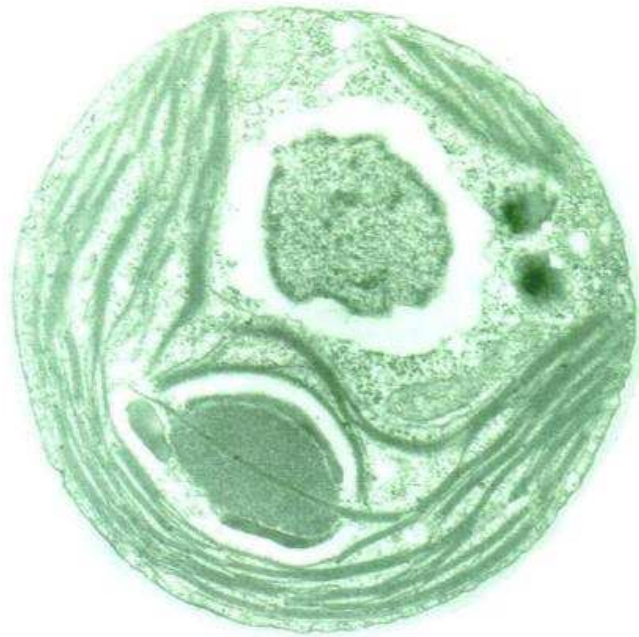
cytoplasme.

Chloroplaste.

vacuole.

Observation de chlorelles au microscope x600

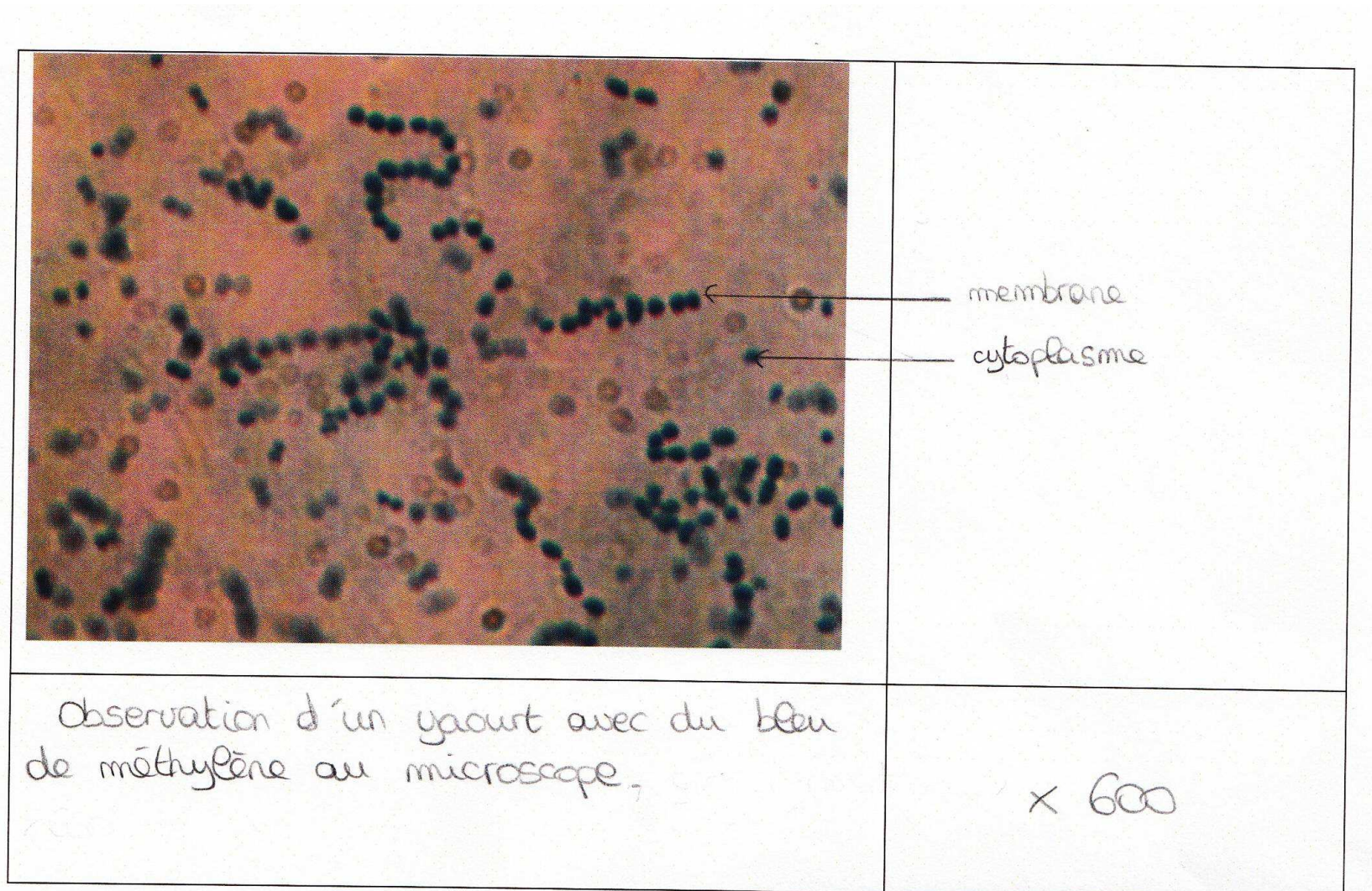
CHLORELLE



chlorelle (algue verte unicellulaire)
diamètre cellulaire d'environ 5 μm

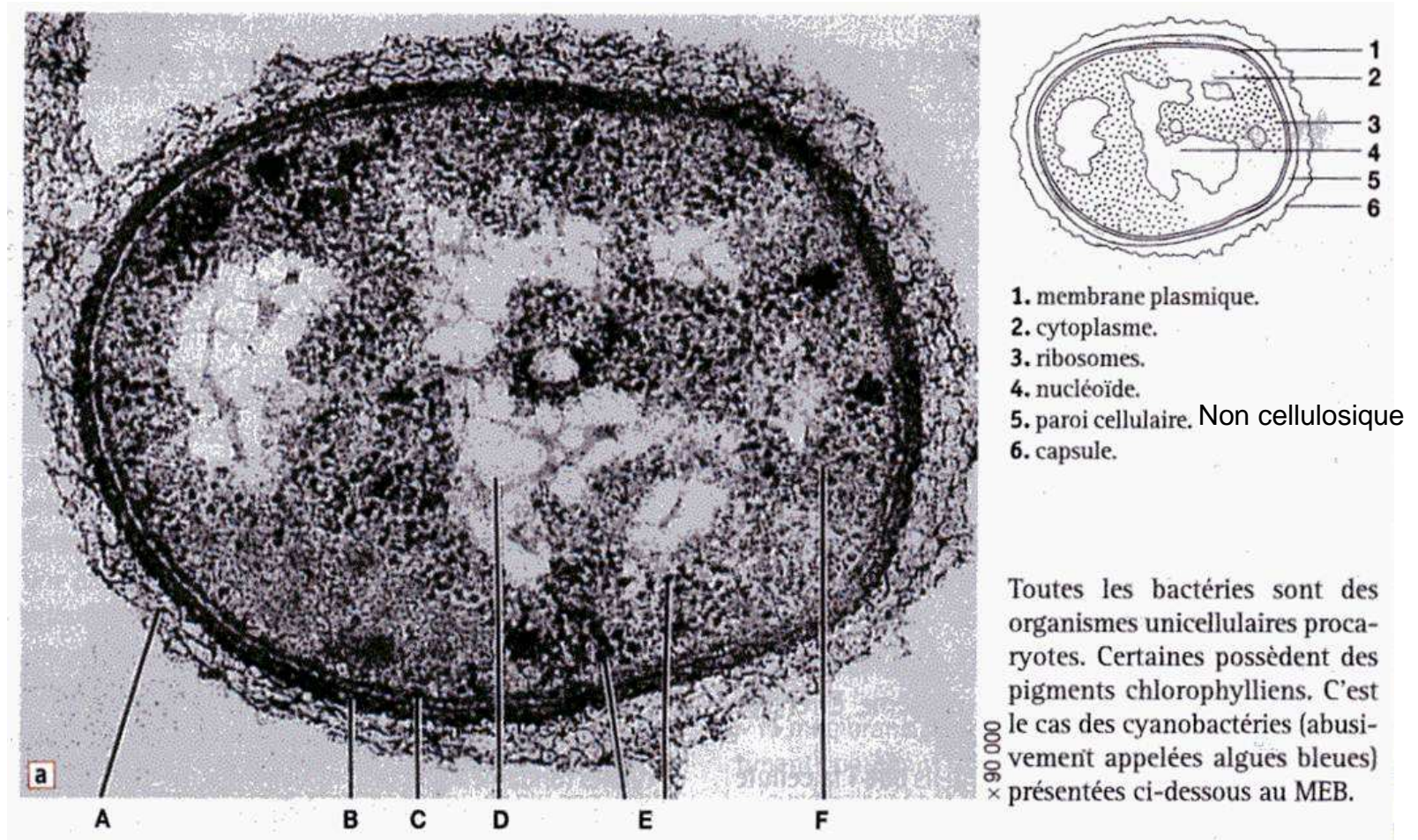
Chlorelle en microscopie électronique

Bactérie du yaourt



Observation au microscope optique

Bactérie du yaourt



Bactérie du yaourt en microscopie électronique